



facsimile systems

copier/multifunction systems

mailing systems

production mail

shipping systems

logistic solutions

software solutions

management services

financial services

consulting

supplies

# Pitney Bowes Model DL170



# complete OFFICE SOLUTION

Setting new performance standards in the multifunctional marketplace, the Pitney Bowes DL170 delivers critical document processing functions in one compact, space-saving design...full-featured standalone faxing, fast digital copying, and optional PC print and scan flexibility.



With uncompromising speed and power, the DL170 is ideal for small- to mid-size companies, workgroups within larger corporations, satellite locations, branch offices or any business that requires a highly modular system capable of handling multiple tasks.

Whether deploying the DL170 in a standalone or networked environment, document management, processing and communication have never been so easy. Let this dynamic multifunctional business solution bring next-generation performance and efficiency to your office.

# advanced HIGH-VOLUME FAX

Engineered for the most demanding fax applications, the DL170 is designed to dramatically improve workflow and boost your office's overall productivity by putting indispensable time- and cost-saving features at your fingertips. These powerful communication tools are combined to make the DL170 the most complete multifunctional solution ever assembled.

## 33.6 Kbps Modem

With a 33.6 Kbps modem and JBIG data compression working together, the super-fast, super-efficient DL170 supports 2.8 second-per-page fax transmit speed, presently the fastest speed possible on analog telephone lines.

## Platen Top-Flatbed Scanner

Unlike sheet-fed multifunctional devices, the Pitney Bowes DL170's platen top enables you to fax from bound documents, 3-D objects or other originals up to 8.5" x 14".



## 200-Number Autodialer

Automate the fax process by storing up to

55 One-Touch and 145 Speed Dial numbers in the DL170's Autodialer. Besides saving time, pre-storing frequently used numbers eliminates misdialing and prevents users from inadvertently directing a document to the wrong location.

## Expandable Document Memory

Supporting both copy and fax functions, the 8 MB standard memory is expandable to 32 MB. So regardless of volume, the DL170 can easily handle memory-dependent applications.

## 256-Level Halftone

256-level halftone, enhanced by advanced image smoothing technology, combine to produce superior output quality whenever you fax (or copy) photographs or grayscale images.

*Macro Keys and Soft Keys used to simplify everyday copy and fax functions.*

## Fax Feature Highlights

- Activity/Transmit Reports
- Alternate Number
- Auto Cover Sheet
- Auto Redialing
- Battery Back-Up (72 hours)
- Block Junk Fax
- Broadcast (230 Locations)
- Bulletin Boxes (50)
- Delayed Commands (99)
- Group Dialing
- Macro Keys (2)
- Program Keys (2)
- Soft Keys (3)



# intelligent COPIER DESIGN

State-of-the-art features combine to create a remarkable price/performance leader that leaves competitors in the dust. Why? Because not only is the DL170 a fully-featured fax machine, it also serves as a robust copier. And, at 17 copies-per-minute and 600 x 600 dpi, speed and image quality are never an issue.



## Digital Scan-Once/Print-Many

At the heart of the DL170 is digital imaging technology that enables scan-once/print-many, which utilizes the 8 MB internal memory to encode and replicate images. This method uses far fewer moving parts, eliminating wear and tear on your documents, while improving throughput speeds and significantly enhancing reliability.

## Versatile Output Capabilities

The D170 comes standard with a 500-sheet paper cassette that accommodates letter, legal and half-letter sized paper and a handy 50-sheet bypass tray for envelopes, transparencies, postcards, labels and other non-standard media. An additional 500-sheet paper cassette can be added for a maximum paper supply of 1,050 sheets.

## Document Input Features

A large 50-sheet automatic document feeder and a platen top (flatbed scanner), makes short work of copying bound documents, such as books, magazines and other 3-D objects.

## Copier Feature Highlights

- ⊙ Combine (4-to-1)
- ⊙ Copy & Fax Key
- ⊙ Copy Job Programming (10)
- ⊙ Copy Protection
- ⊙ Electronic Sorting/Stacking
- ⊙ Negative/Positive Image
- ⊙ Text, Text & Photo, Photo Modes
- ⊙ Zoom Reduction/Enlargement



*Optional Two-Bin Job Sort Tray neatly separates your faxes from your copy jobs.*

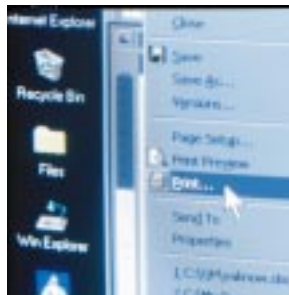


# The Call for connectivity

Transform the DL170 into an imaging powerhouse through the integration of optional Print and Scan interfaces...either in standalone PC or LAN (Local Area Network) environments.

## Full Function Printing

For PC users, the PCL printer interface with sophisticated print drivers enables fast 17 page-per-minute output at 600 dpi. Additionally, a convenient print monitor allows you to track and control print jobs effortlessly from your Windows® desktop.



Sharing print capabilities in a networked environment allows a reduction in capital expenditures. The Pitney Bowes LAN Interface (10/100BaseT Ethernet) option for print enables the DL170 to seamlessly connect to your network.

## Scanning Convenience

Pitney Bowes' TWAIN scanning option is an affordable and powerful way to quickly and easily import paper-based documents into your Windows® applications. Compatible with most TWAIN-compliant Windows® software, you can choose the scanning functions that are suited to your needs.

## Printer Feature Highlights

- ⊙ 17 Page-Per-Minute Printing
- ⊙ 600 dpi Resolution
- ⊙ Paper Tray Selection
- ⊙ Print Monitor
- ⊙ Sort and Stack Printing
- ⊙ Watermarks



## Superior Reliability and Comprehensive Network User Support

We provide the support your users need to operate all Pitney Bowes networked and standalone equipment at peak performance. A call to our National Diagnostic Center puts you in touch with our highly-trained staff of technical professionals. Whether you have an operational question or seek an explanation of equipment features and functions, you can be sure that our experts know the equipment, are fully trained in the applications and are able to keep the equipment working for you. Superior PC-based remote diagnostics, repair and configuration enable us to resolve calls over 75% of the time without the need for on-site service.

## Environmentally Friendly

The energy-saving DL170 fully meets the EPA's pollution-reducing standards by automatically reducing power consumption during inactive periods, keeping your office environment clean and safe.

# Specifications

## General Specifications

Configuration:	High-Speed Fax, Digital Copier with Optional Interfaces (PC and Network Print)
Print Method:	LED, Dry Mono-Component Toner
Print Speed (Maximum):	17 ppm (Letter-Size; Portrait)
Scan Speed (Maximum):	1.7 spp - ADF; 3.7 spp - FBS
Resolution:	600 dpi - Copy and Print
Document Memory:	8 MB (650 Pgs*) - Standard 8 MB (680 Pgs*); 24 MB (2,040 Pgs*) - Optional 32 MB (2,690 Pgs*) - Maximum
Memory Battery Back-Up:	72 Hours
Dual Access:	Multitasking
Microprocessor:	RISC; 32-bit

## Document Input

ADF Capacity:	50 Sheets (20 lb.; Letter-Size)
Max/Min Original Size (W x L):	8.5" x 35.4"/4.7" x 3.9" - ADF 8.5" x 14"/No Minimum - FBS
Original Type:	Sheet - ADF; Book - FBS
Original Thickness (Maximum):	13-24 lb. - Single Sheet 13-20 lb. - Multi-Sheet
Scan Method:	Flatbed CCD (Charge-Coupled Device)
Scan Width (Maximum):	8.2" - Fax; 8.5" - Copy
Halftone:	256 Levels
Contrast Control:	Normal, Light, Dark (5 Settings)

## Document Output

Recording Paper Supply:	500-Sheet Cassette and 50-Sheet Bypass Tray - Standard 500-Sheet Cassette - Optional 1,050 Sheets Maximum
Recording Paper Size:	Cassette - Letter, Legal, Half-Letter Bypass - Letter, Legal, Half-Letter, A4, A5, A6, F4, Executive, Postcards, Envelopes, Transparencies, Labels and Other Non-Standard Media**
Recording Paper Weight:	24 lb. Maximum - Cassette and Bypass
Output Tray Capacity:	300 Sheets

## Operating Environment

Phone Line:	PSTN or Equivalent
Power Requirements:	120 VAC $\pm$ 10%, 50-60 Hz
Energy Saver Mode:	Yes (Energy Star Compliant)
Temperature:	50-89.6° F (10-32° C)
Humidity:	20-80%
Power Consumption:	Sleep Mode - 19.0 Watts; Standby - 21.2 Watts; Maximum - 1150 Watts

## Physical

Dimensions (W x D x H):	20.1" x 19.4" x 14.8" (Standard Configuration)
Weight:	51.4 lbs. (Standard Configuration)
Supplies:	Easily Installed, High-Volume Toner Cartridge and Drum Unit

\* Based on ITU-T Test Document #1.

\*\* A4, A5, A6, Executive, DL, CM10, Monarch and Postcard can be used when copying.

## Fax Specifications

ITU-T Compatibility:	Group 3; ECM
Modem Speed:	33.6 Kbps (ITU-T V.34) Maximum; Auto fallback; Optional Second 33.6 Kbps Phone Line
Compression Method:	MH, MR, MMR, JBIG, Proprietary
Transmit Speed (Maximum):	2.8 spp*
Scan Resolution:	Standard 203 x 98 dpi (8 dot/mm x 3.85 l/mm) Fine 203 x 196 dpi (8 dot/mm x 7.7 l/mm) Superfine 203 x 392 dpi (8 dot/mm x 15.4 l/mm) Ultrafine 406 x 392 dpi (16 dot/mm x 15.4 l/mm)
Other Fax Features:	Activity Transmit Reports Group Dialing (32) Alternate Number Image Rotation Auto Cover Sheet ITU-T Subaddress Routing Auto Page Retransmit Macro Keys (2) Auto Receive Reduction Memory Reception Auto Redialing Monitor Speaker Batch Transmission On-Hook Dialing Block Junk Fax Pause Key Book & ADF Faxing Polling Reception Broadcast (230 Locations) Program Keys (2) Bulletin Boxes Relay Broadcast Call Request Remote Diagnostics Delayed Commands (99) Security Reception Dial-While-Scan Soft Keys (3) F-Code Substitute Reception

## Copier Specifications

Technology:	Digital Scan-Once/Print-Many
Warm-Up Time:	20 Seconds or Less
First-Copy-Out Speed:	10 Seconds
Reduce/Enlarge Presets:	Reduce: 50%, 64%, 78% Enlarge: 129%, 200%
Zoom Reduce/Enlarge:	1% Increments
Other Copier Features:	10-Job Copy Programming Electronic Sorting/Stacking (99 Sets) Combine (4-to-1) Negative/Positive Image Copy Protection Text, Text & Photo, Photo Modes Fax & Copy

## Optional PC and LAN Connectivity Options

Printer Interfaces:	Parallel Port or LAN Interface (10/100BaseT Ethernet) enables 17-ppm PCL 6, PCL 5e and HP GL2 Printing
TWAIN Scanner Interface:	Parallel Port supports scanning
PC Operating System:	Windows® 2000/Me/NT/98/95/3.1
Networks and Protocols:	Windows® 2000/NT/Novell® Netware®; TCP/IP and IPX/SPX

## Optional Accessories

8 MB Memory Upgrade	Mechanical Counter
24 MB Memory Upgrade	Second 33.6 Kbps Phone Line
500-Sheet Paper Cassette	Telephone Handset
Cabinet Stand	Two-Bin Job Sort Tray

Windows is a registered trademark of Microsoft Corporation. Novell Netware is a registered trademark of Novell, Inc. All other terms and product names may be trademarks or registered trademarks of their respective owners and are hereby acknowledged.

Specifications subject to change without notice.



## Pitney Bowes Office Systems

United States:  
100 Oakview Drive  
Trumbull, CT 06611  
800 290-7860  
800 446-0760 Fax

International Locations:  
For additional countries  
serviced, please see your sales  
consultant or visit us at  
www.pitneybowes.com



As an ENERGY STAR partner, Pitney Bowes Inc. has determined that this product meets the ENERGY STAR guidelines for efficiency.

Copyright 2001, Pitney Bowes Inc.  
All Rights Reserved  
Printed in USA  
♻️ Recyclable  
FX15233